



Working with other file types

Technical details

Document Version: 1.0

For Internal Review

Willie John McKnight

TABLE OF CONTENTS

1	OTHER FILE TYPES	3
1.1	DBF & CSV.....	3
1.1.1	DBF, dBase 5.0 file types	3
1.1.2	CSV, Comma Separated Values	3
2	DBF FILES.....	4
2.1	DEFINE THE DATA SOURCE	4
2.2	WORKING WITH THE DATA SOURCE IN DATASHARE.....	6
3	CSV FILES.....	11
3.1	DEFINE THE DATA SOURCE	11
3.1.1	Schema.ini.....	11
3.1.2	Data Source Definition.....	11
3.2	WORKING WITH THE DATA SOURCE IN DATASHARE.....	14

1 Other file types

DataShare works well with known database types PostgreSQL, ORACLE, etc. However to use DataShare with a number of other types requires using some specialised settings. The following illustrates how to set these up, and get DataShare to import them.

1.1 DBF & CSV

The two types that we are concerned with are DBF files and CSV files.

1.1.1 DBF, dBase 5.0 file types

dBase is a simplified database file format used to store structured data. You can specify an ODBC connection to these files. Each file is considered a separate table in a database; which is considered the directory in which the file resides.

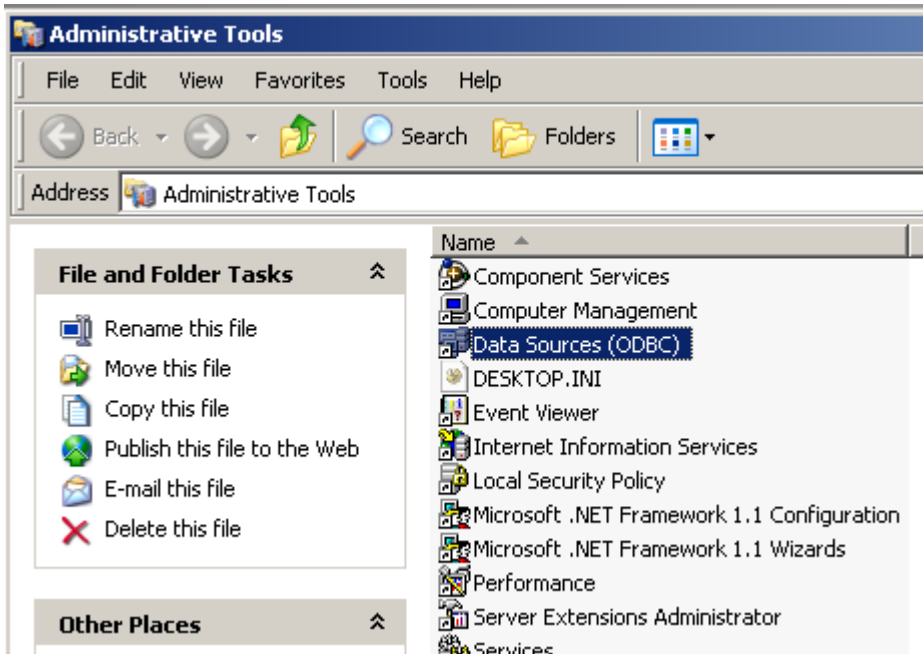
1.1.2 CSV, Comma Separated Values

CSV is the encompassing name for all delimited text, they need not adhere strictly to the 'comma separation', but simply be delimited by a character into a tabular form of data. Unlike the DBF, they hold no information about their structure, and require a separate file to provide this information.

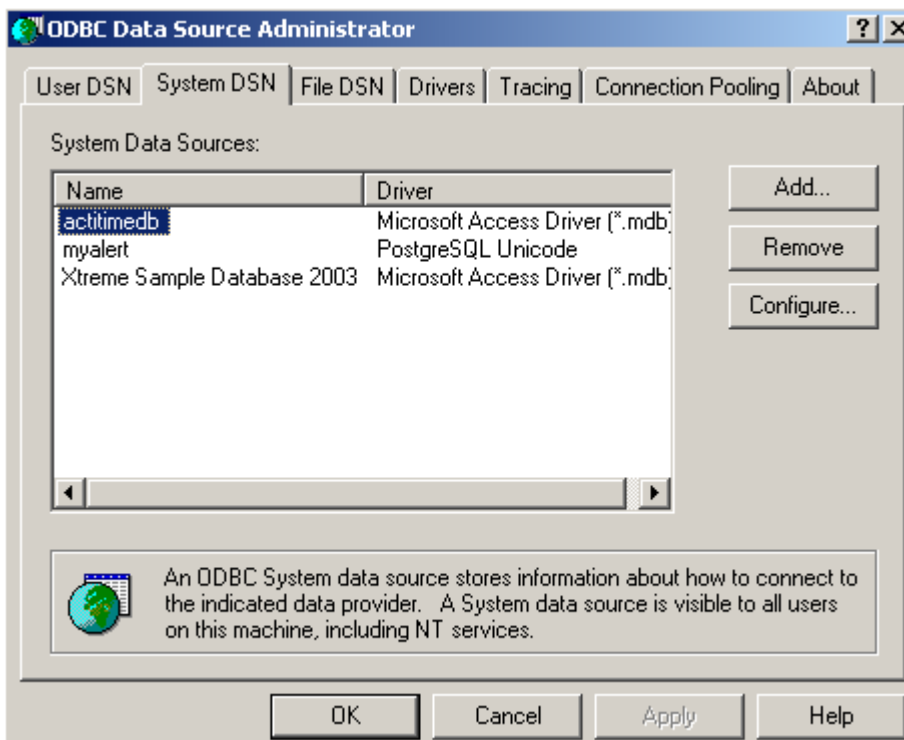
2 DBF Files

2.1 Define the Data Source

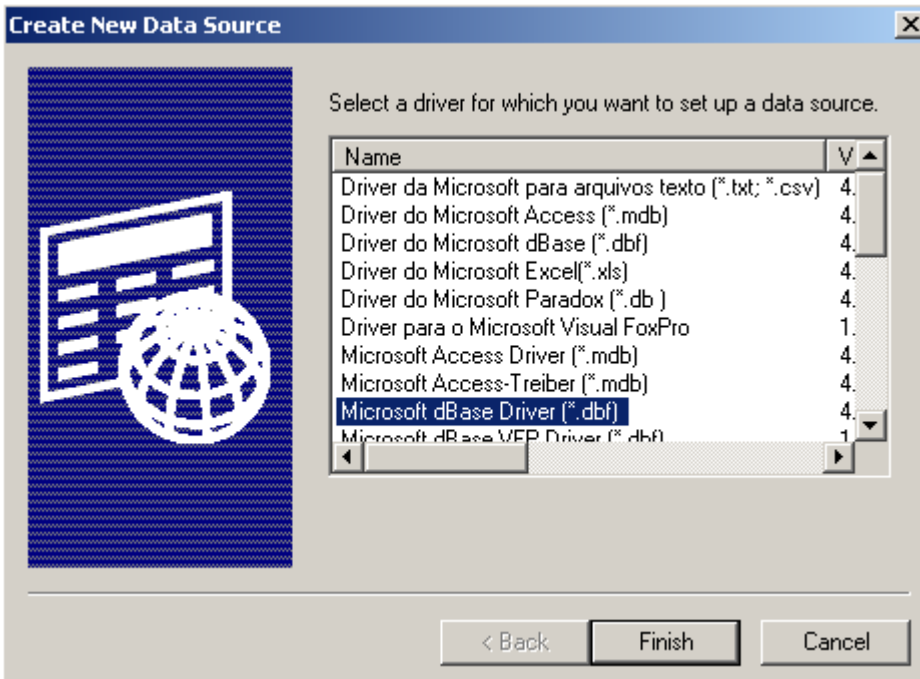
From the Administrative Tools area, open the 'Data Sources (ODBC)'. The Administrative Tools can usually be found in the control Panel.



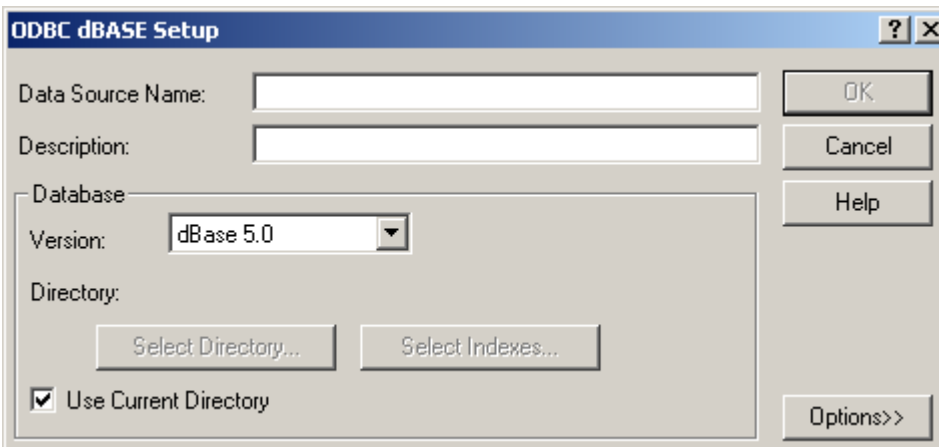
Go to the System DSN (second tab) and click on the 'Add...' button.



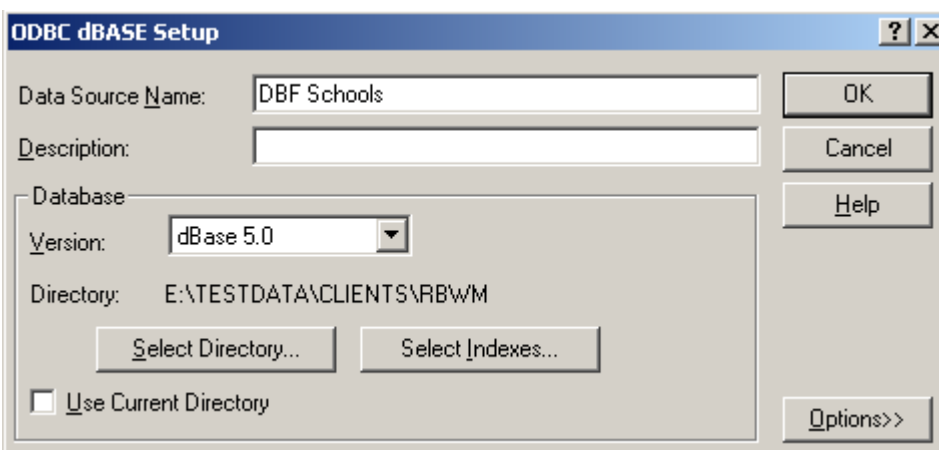
Choose the Microsoft dBase Driver (*.dbf) and press 'Finish'.



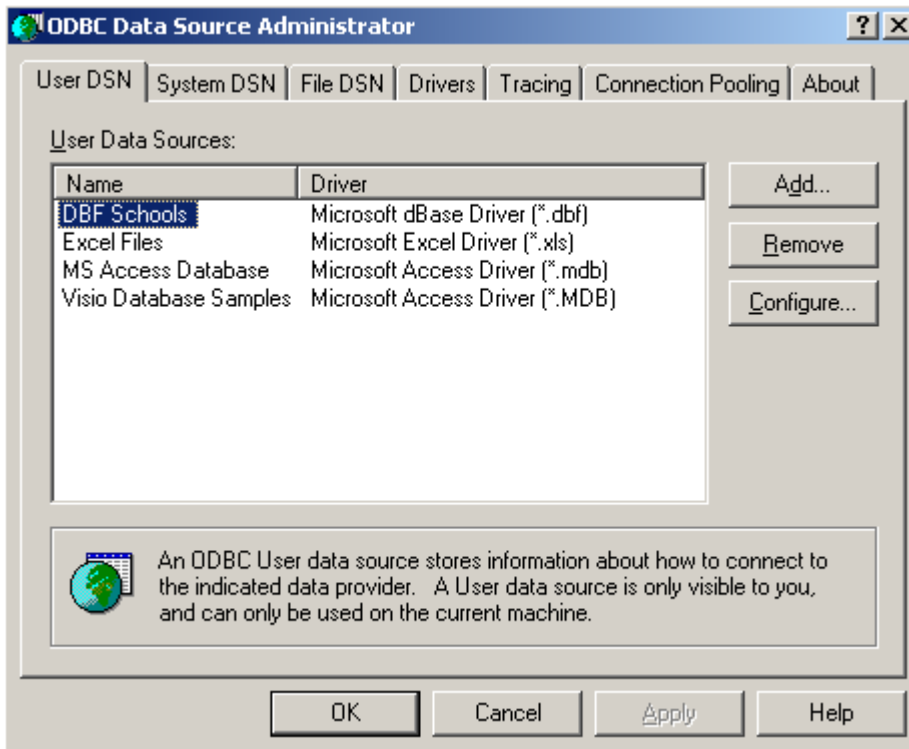
Complete the 'ODBC dBase Setup' by filling in the Data Source Name, use something that will uniquely identify the source data, e.g. DBF Schools.



Uncheck the 'Use Current Directory' and using the 'Select Directory...' button, choose the directory that the dbf file is stored.

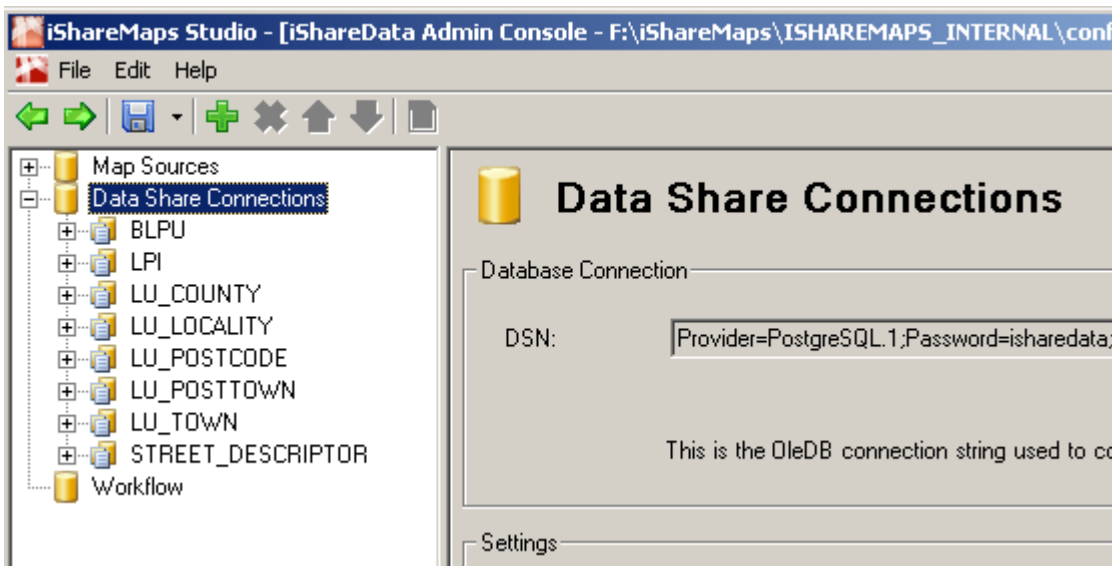


Now press OK and the new entry should appear in the System DSN list.

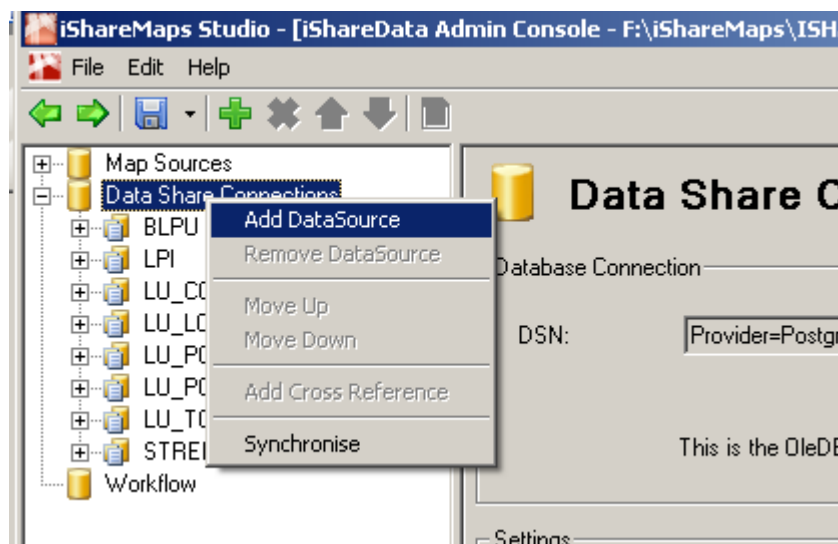


2.2 Working with the Data Source in DataShare

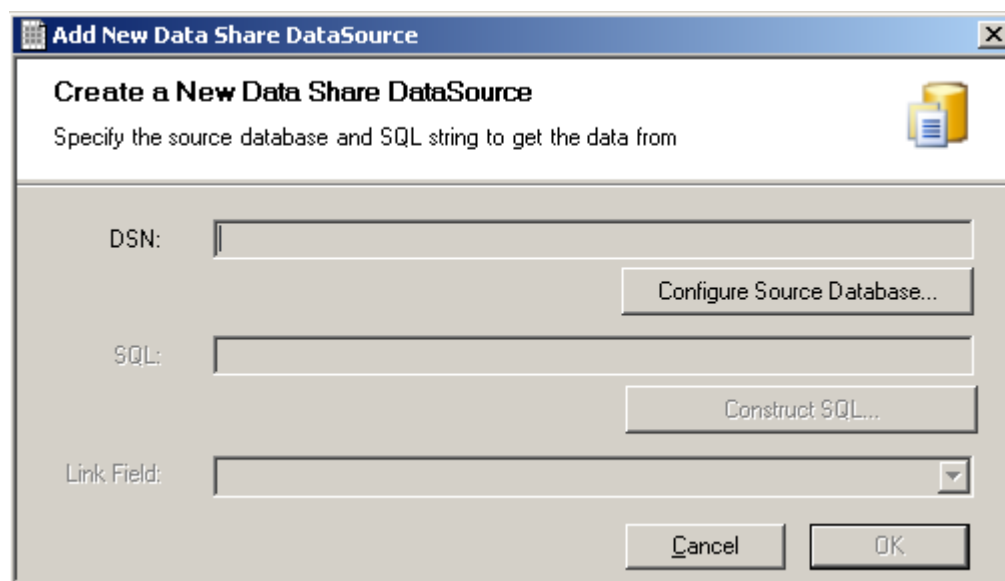
Start the iShareMaps Studio, and go to the Data Share Node.



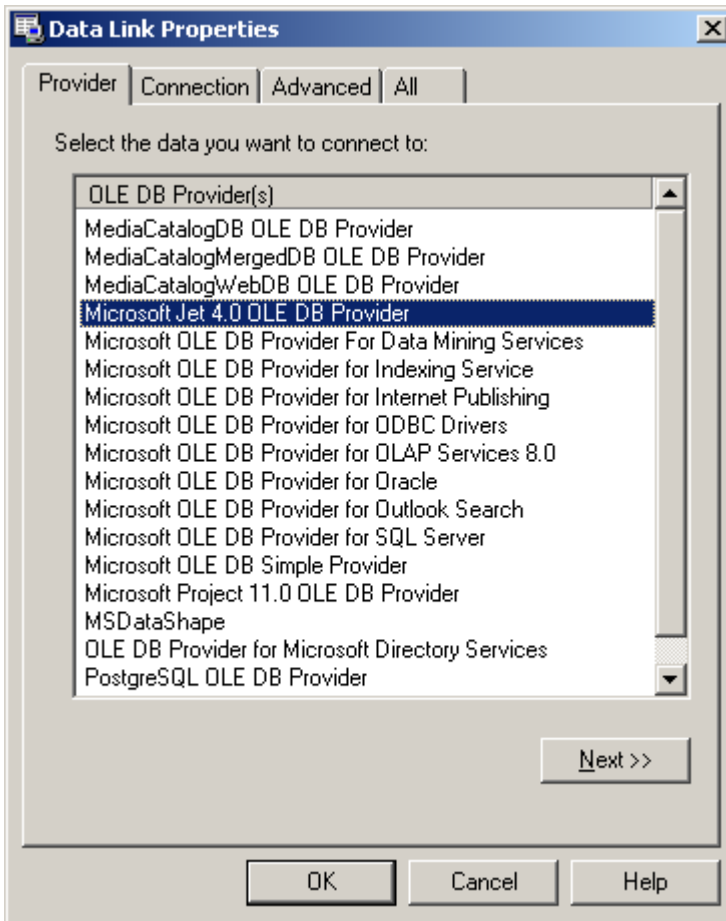
Right-click and choose the 'Add DataSource' option.



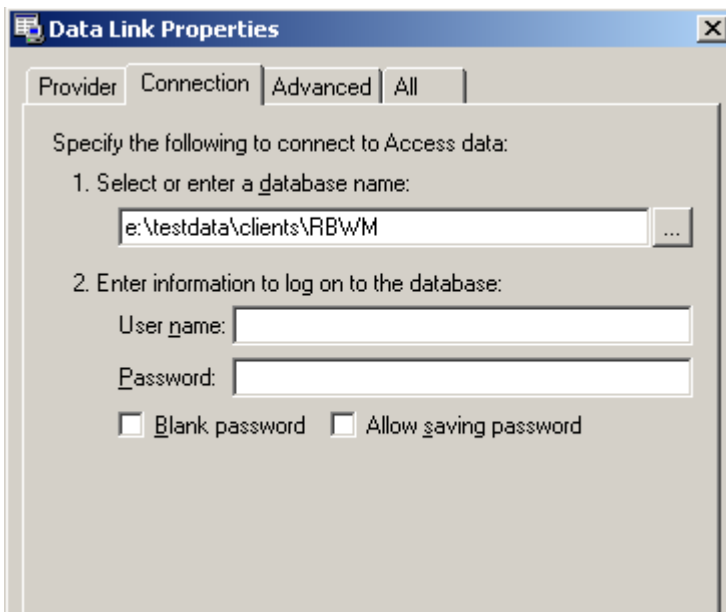
This will bring up the 'Create a New Data Share DataSource' dialog. Press the 'Configure Source Database...' button.



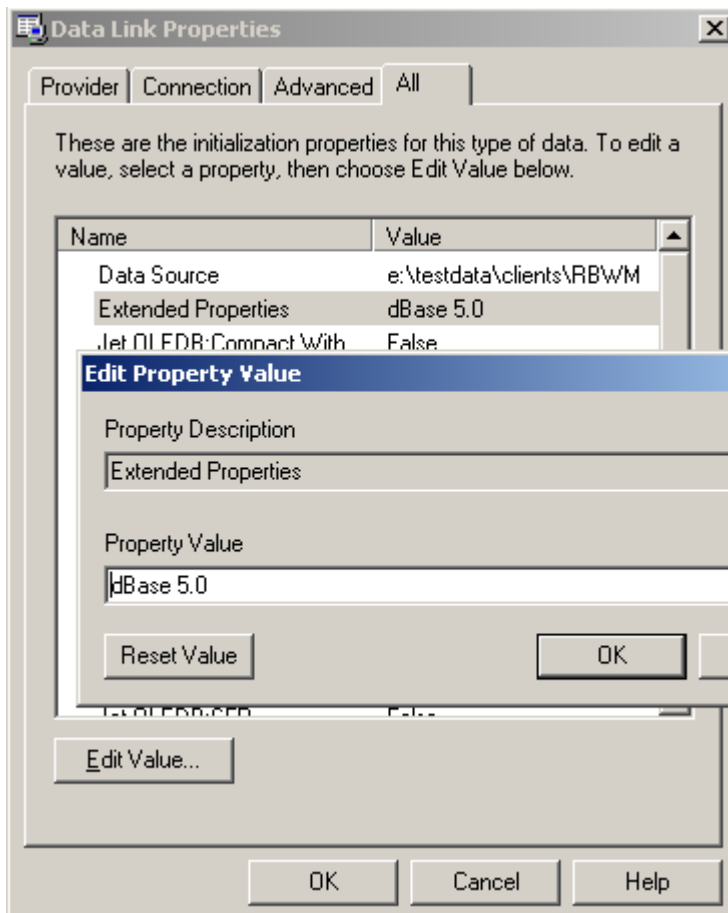
This will bring up 'Data Link Properties' dialog, which generally opens on the second tab, the 'Connection' tab. Choose the first tab, the 'Provider' tab, and choose the 'Microsoft Jet 4.0OLE DB Provider' option.



Choose the 'Next >>' button, and enter the directory where the DBF file is stored. You do not need to fill in any log on information.

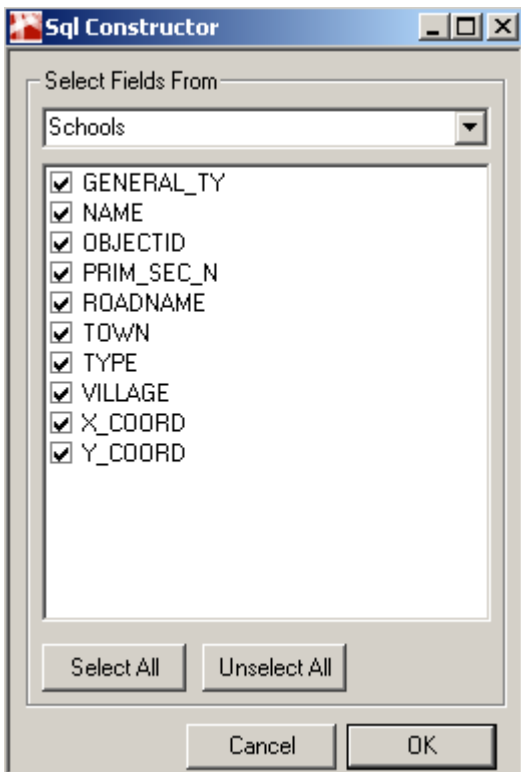


Now select the fourth tab, 'All', and select the 'Extended Properties' Field, and press the 'Edit Value' button. In the dialog that arrears, enter the value 'dBase 5.0' and press OK.

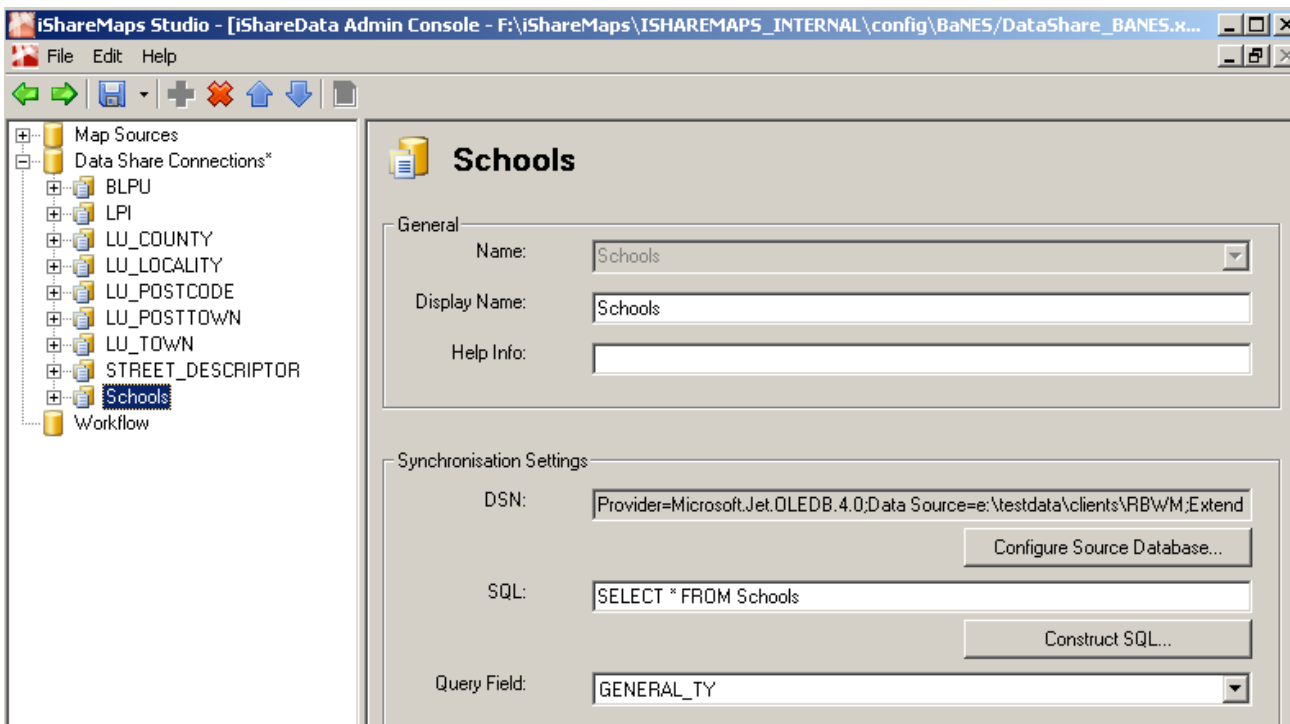


To ensure that the 'connection' is setup correctly, you can go back to the 'Connection' tab and press the 'Test Connection' button. Once correctly setup, press OK. You are now taken back to the 'Create New Data Source' Dialog.

Press the 'Construct SQL...' button. This should bring up a list of the available fields in the DBF file. If there are more than one DBF files in the directory, you may have to use the drop down to select the one you are after.



Choose those you wish to import, and press OK. Press OK on the 'Create New Data Source' dialog, and you will now have a new entry in DataShare, in this instance called 'Schools'.



You can now work with this Data Share Connection just like the other that exist.

3 CSV Files

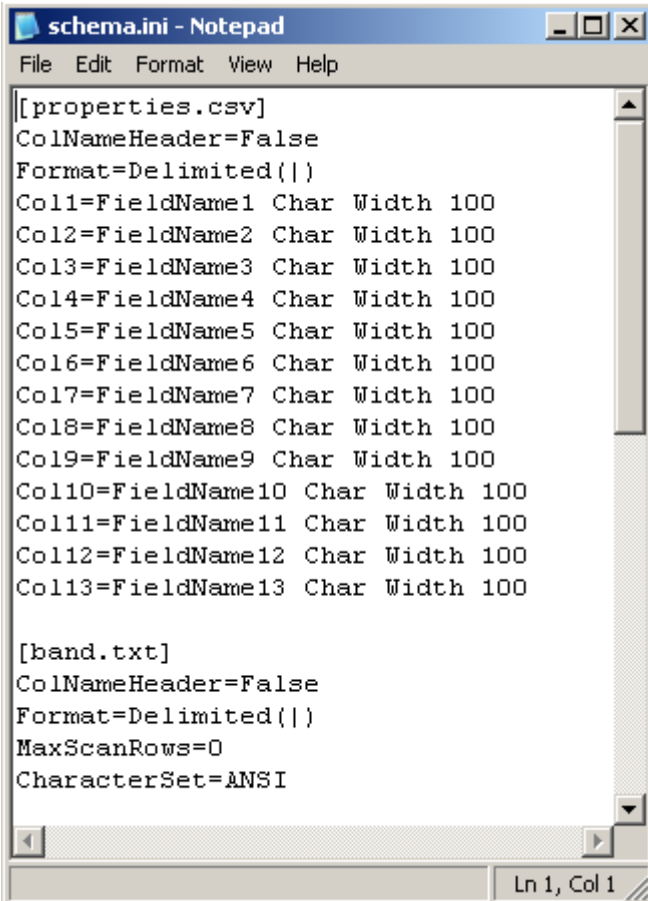
3.1 Define the Data Source

As mentioned earlier, CSV files have no internal definition. This has to be provided separately. This is done by the use of a file called 'schema.ini' in the directory that the CSV file resides.

3.1.1 Schema.ini

Unfortunately this has to be built manually. For more information please contact your database team or Astun Technology Ltd staff members.

This file is a standard INI file with a section for each file in the directory. For this example we will be dealing with a file called 'properties.csv'. It is delimited by the 'Pipe' character '|', and has 13 columns. The simplest definition for this file would be as follows:-



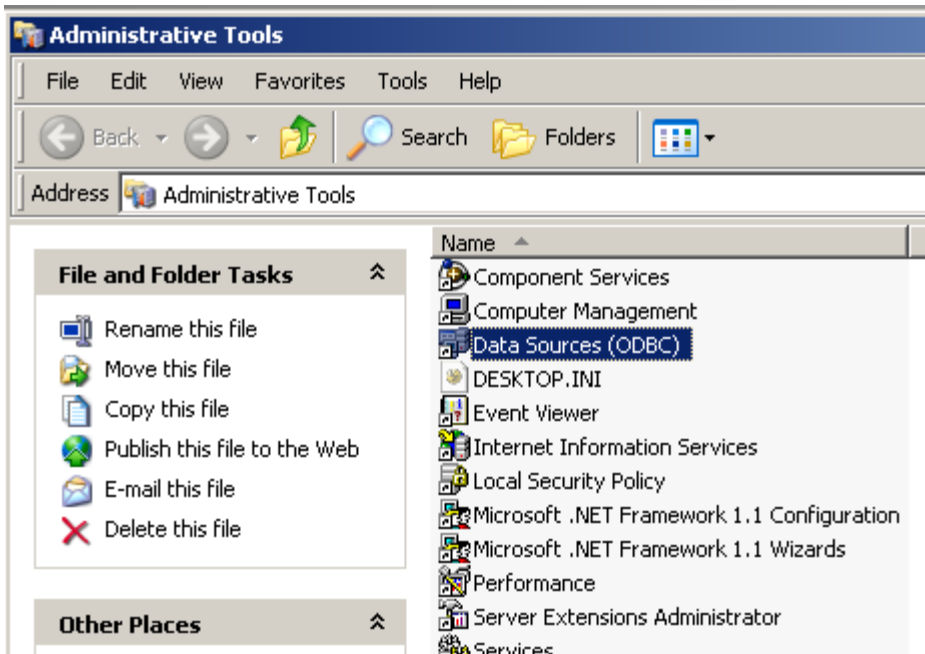
```
schema.ini - Notepad
File Edit Format View Help
[[properties.csv]
ColNameHeader=False
Format=Delimited(|)
Col1=FieldName1 Char Width 100
Col2=FieldName2 Char Width 100
Col3=FieldName3 Char Width 100
Col4=FieldName4 Char Width 100
Col5=FieldName5 Char Width 100
Col6=FieldName6 Char Width 100
Col7=FieldName7 Char Width 100
Col8=FieldName8 Char Width 100
Col9=FieldName9 Char Width 100
Col10=FieldName10 Char Width 100
Col11=FieldName11 Char Width 100
Col12=FieldName12 Char Width 100
Col13=FieldName13 Char Width 100

[band.txt]
ColNameHeader=False
Format=Delimited(|)
MaxScanRows=0
CharacterSet=ANSI
Ln 1, Col 1
```

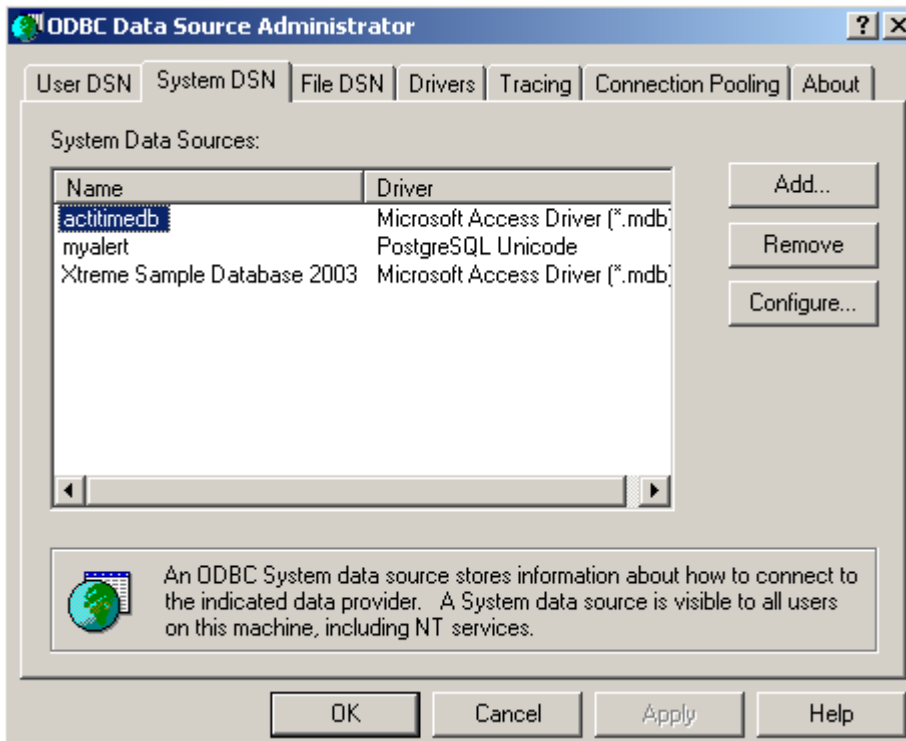
Note that you can change the column names to something more appropriate, but here I have simply chosen 'FieldName x '. I have also chosen to make the data all 100 character text fields. This gives us flexibility if there are problems with the data.

3.1.2 Data Source Definition

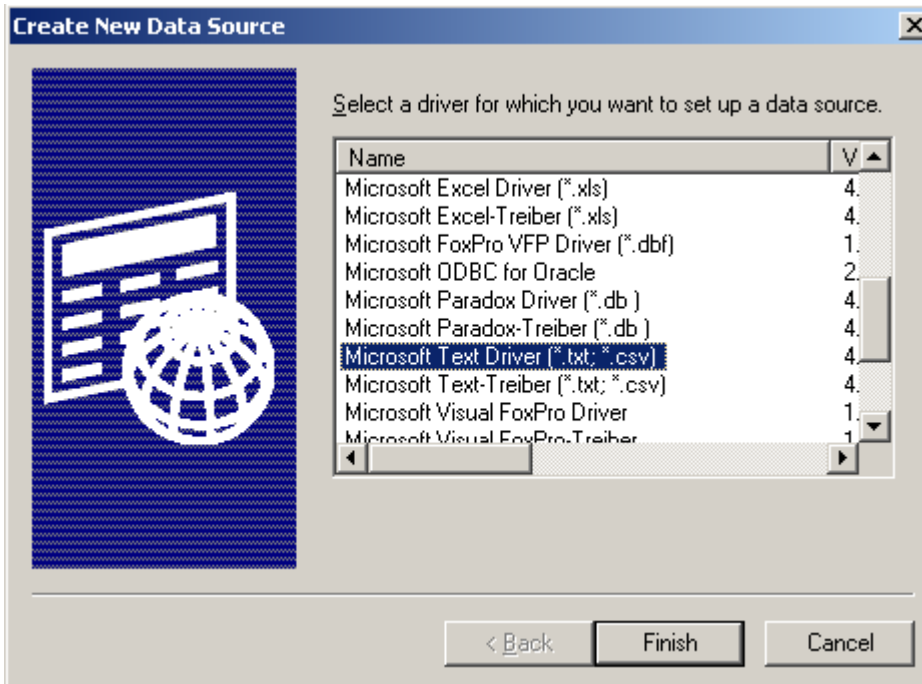
From the Administrative Tools area, open the 'Data Sources (ODBC)'. The Administrative Tools can usually be found in the control Panel.



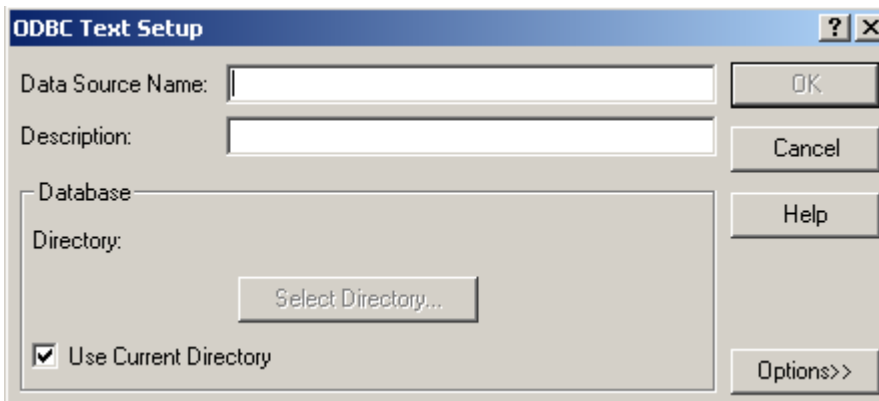
Go to the System DSN (second tab) and click on the 'Add...' button.



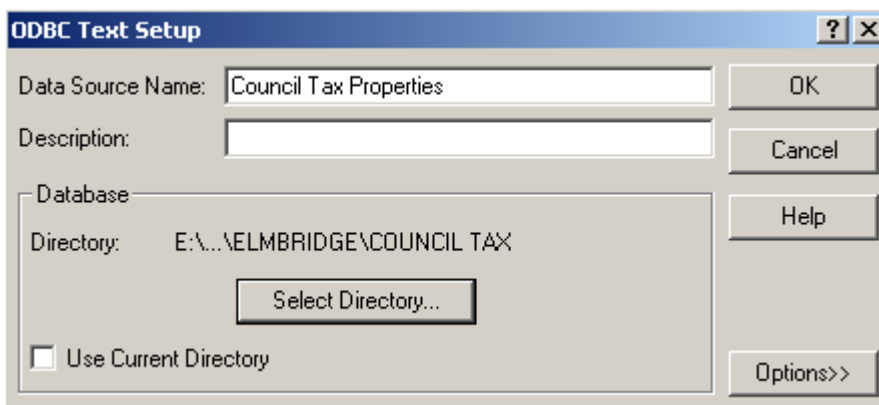
Choose the Microsoft Text Driver (*.txt;*.csv) and press 'Finish'.



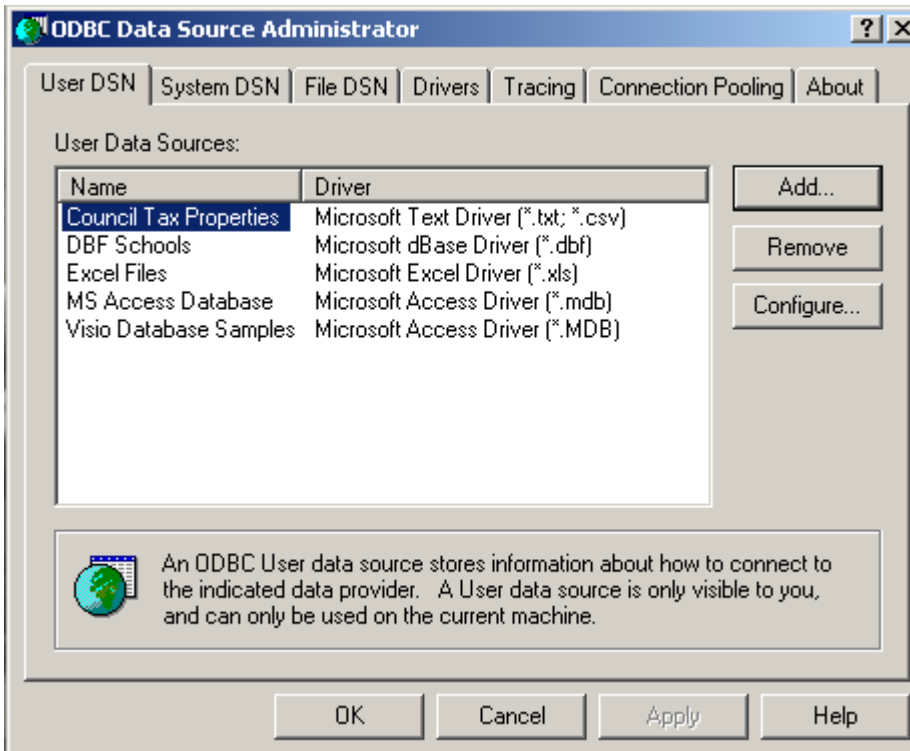
Complete the 'ODBC Text Setup' by filling in the Data Source Name using something that will uniquely identify the source data, e.g. Council Tax Properties.



Uncheck the 'Use Current Directory' and using the 'Select Directory...' button and choose the directory that the file is stored.

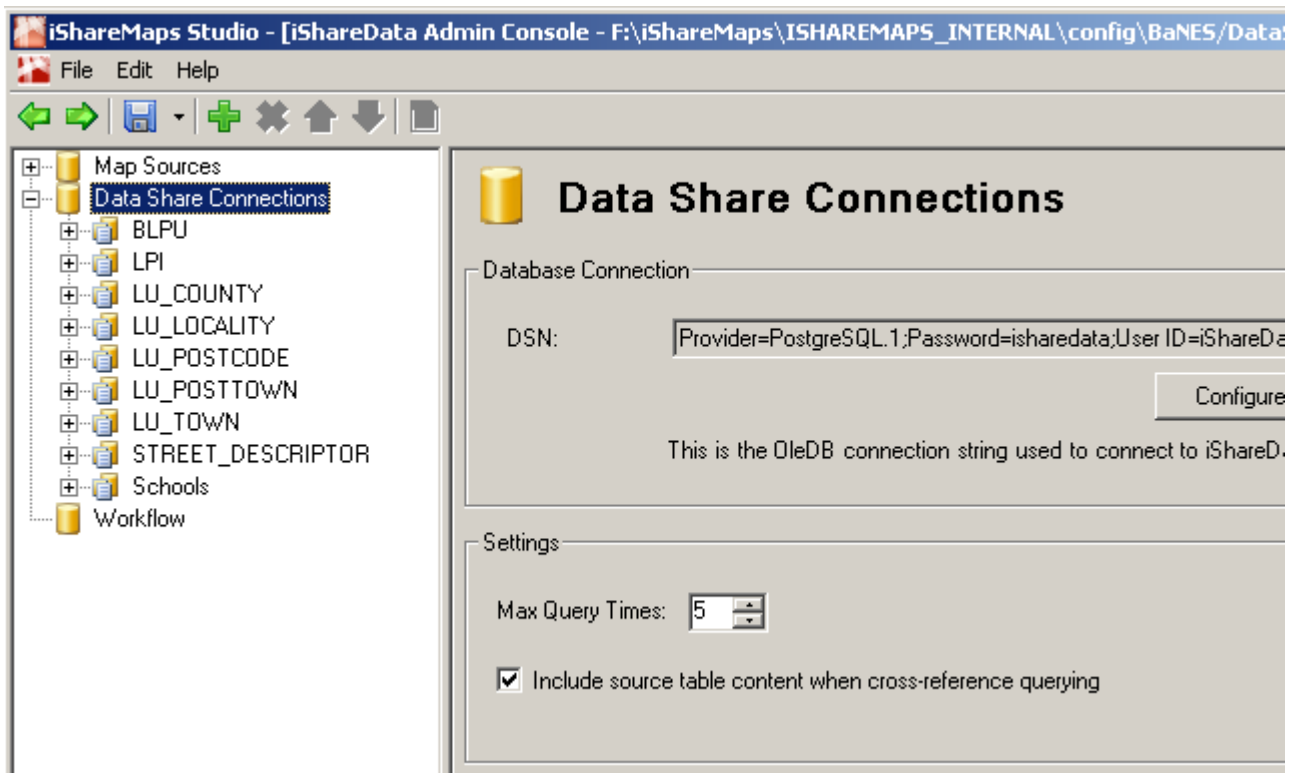


Now press OK and the new entry should appear in the System DSN list.



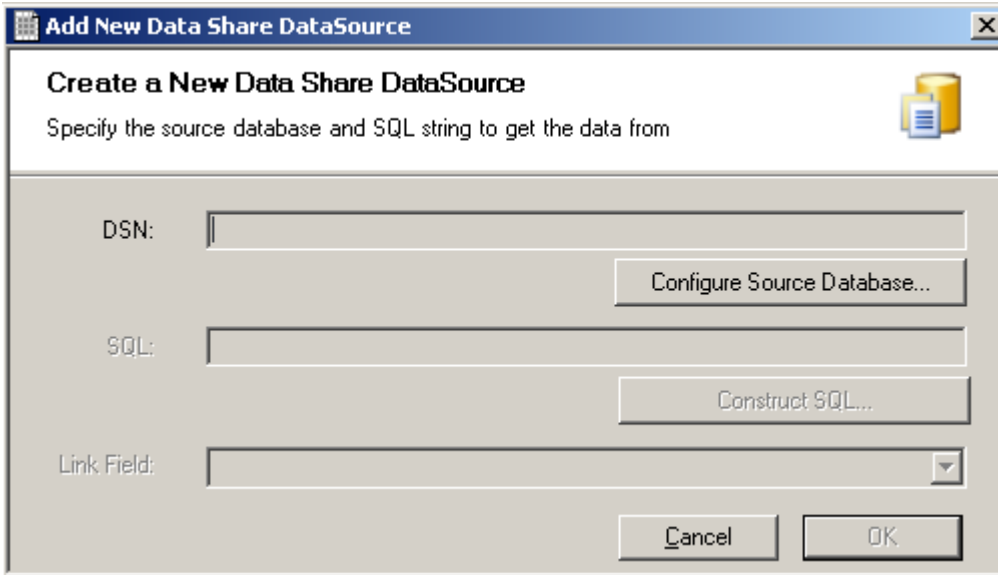
3.2 Working with the Data Source in DataShare

Start the iShareMaps Studio, and go to the Data Share Node.

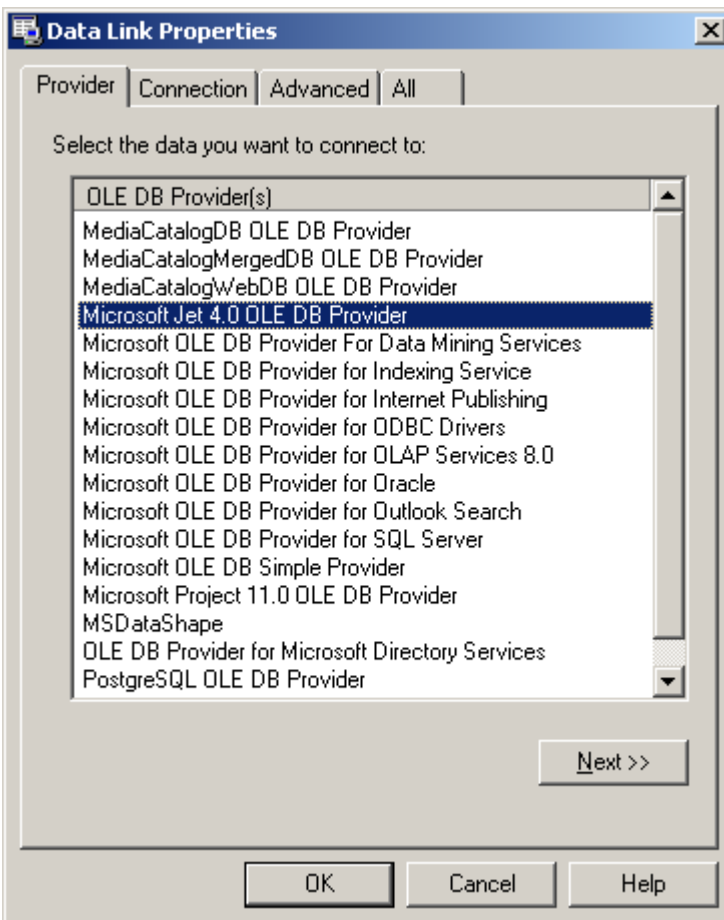


Right-click and choose the 'Add DataSource' option.

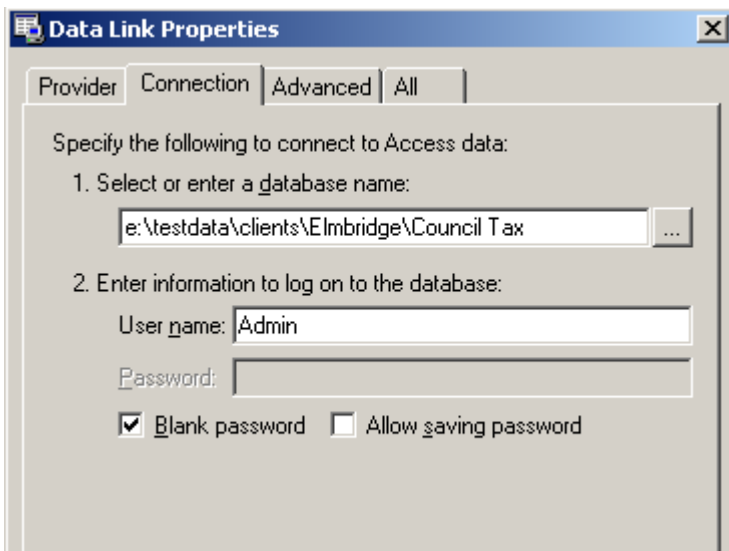
This will bring up the 'Create a New Data Share DataSource' dialog. Press the 'Configure Source Database...' button.



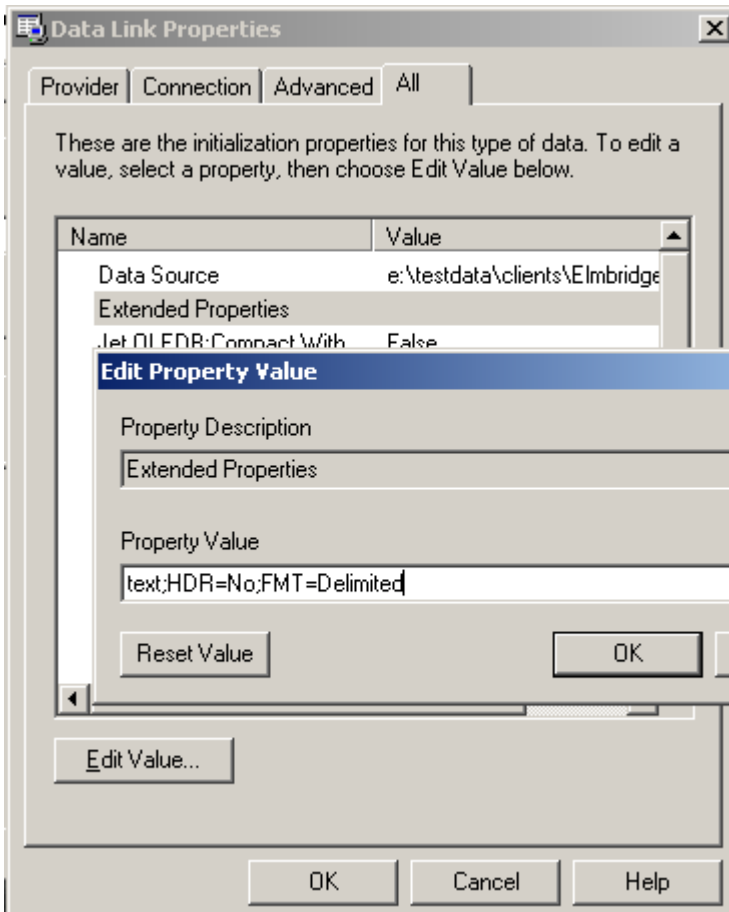
This will bring up 'Data Link Properties' dialog, which generally opens on the second tab, the 'Connection' tab. Choose the first tab, the 'Provider' tab, and choose the 'Microsoft Jet 4.0 OLE DB Provider' option.



Choose the 'Next >>' button, and enter the directory where the file is stored. You do not need to fill in any log on information.

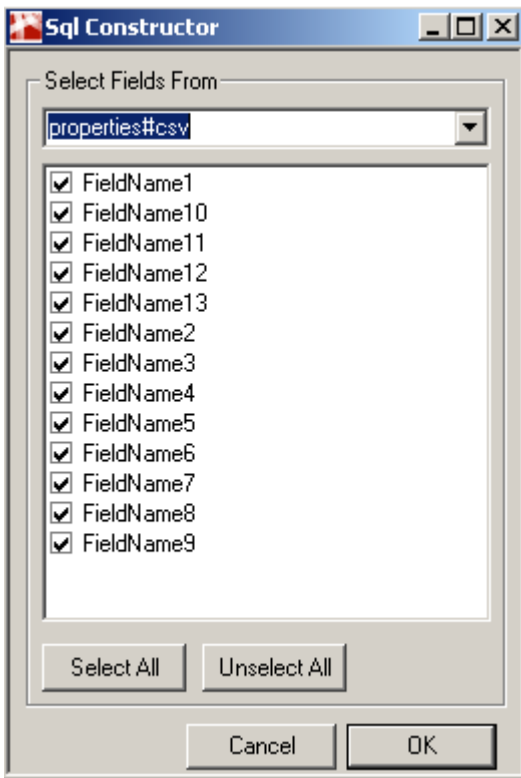


Now select the fourth tab, 'All', and select the 'Extended Properties' Field, and press the 'Edit Value' button. In the dialog that arrears, enter the value 'text;HDR=No;FMT=Delimited' and press OK.

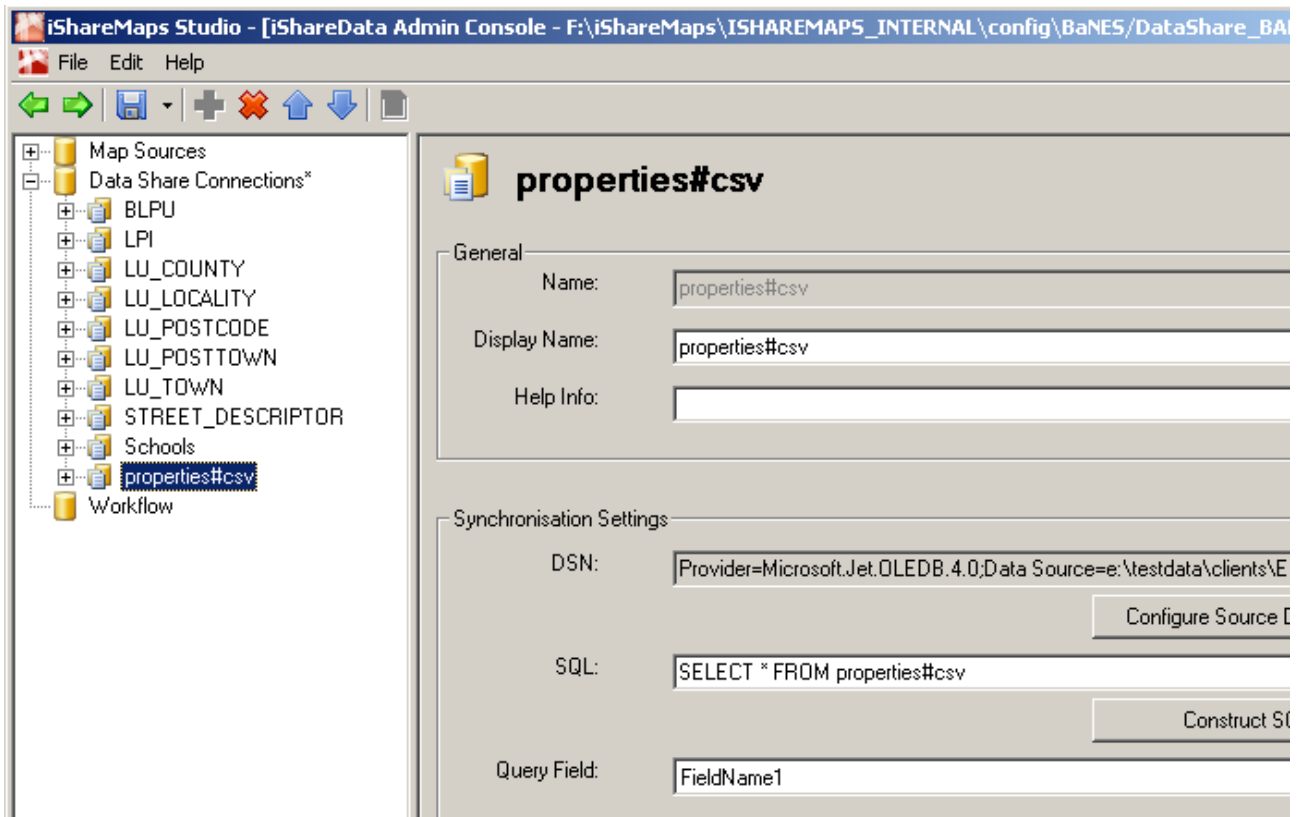


To ensure that the 'connection' is setup correctly, you can go back to the 'Connection' tab and press the 'Test Connection' button. Once correctly setup, press OK. You are now taken back to the 'Create New Data Source' Dialog.

Press the 'Construct SQL...' button. This should bring up a list of the available fields in the DBF file. If there are more than one text files in the directory you may have to select the drop down to get the one you are after.



Choose those you wish to import, and press OK. Press OK on the 'Create New Data Source' dialog, and you will now have a new entry in DataShare, in this instance called 'properties#csv'. Although the name appears weird, it's best to preserve it.



You can now work with this Data Share Connection just like the other that exist.

