



Neither this document nor any part of it should be disclosed to any third party without the prior written consent of Astun Technology Limited. You acknowledge that this document has been provided in reliance upon it being subject to the exemption to disclose. If you disagree that this exemption applies then please return the information and expunge all records of it from your systems, unless we agree to waive this requirement.

## How do I use GIS data with a Lat/Long projection?

The DataShare task for re-building the TAB file for layers projected in Lat/Long need to be re-projected into British National Grid.

This requires needs an additional parameter to force a BNG projection onto the data when re-building the TAB file.

Open the DataShare Task in Studio, select **Expert Mode** and add the following **Additional Parameter**:

```
-t_srs "EPSG:27700"
```

**Tasks\* > GIS01 - Cemetery (BNG)**

Task Name: GIS01 - Cemetery (BNG)

Source Data: MapInfo  
Filename: \\gis01\maps\$\CountyData\Torfaen Data\Cem

Output: MapInfo  
Filename: D:\Maps\TorfaenTest\Overlays\Community\Ce

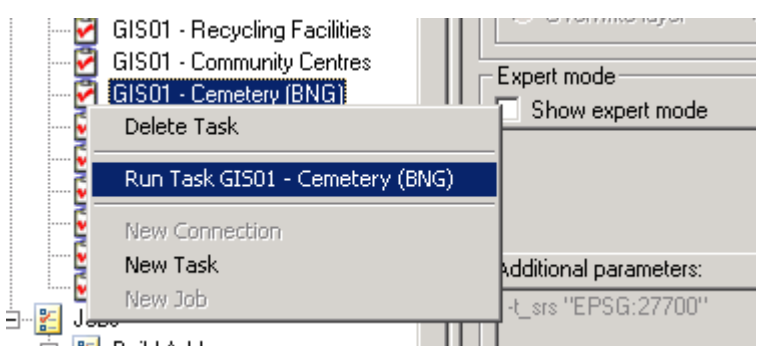
Options:  
 Projection as British National Grid  
 Force Geometry: NONE  
 WHERE statement

Action:  
 Overwrite layer  
 Append to layer  
 Skip Failures

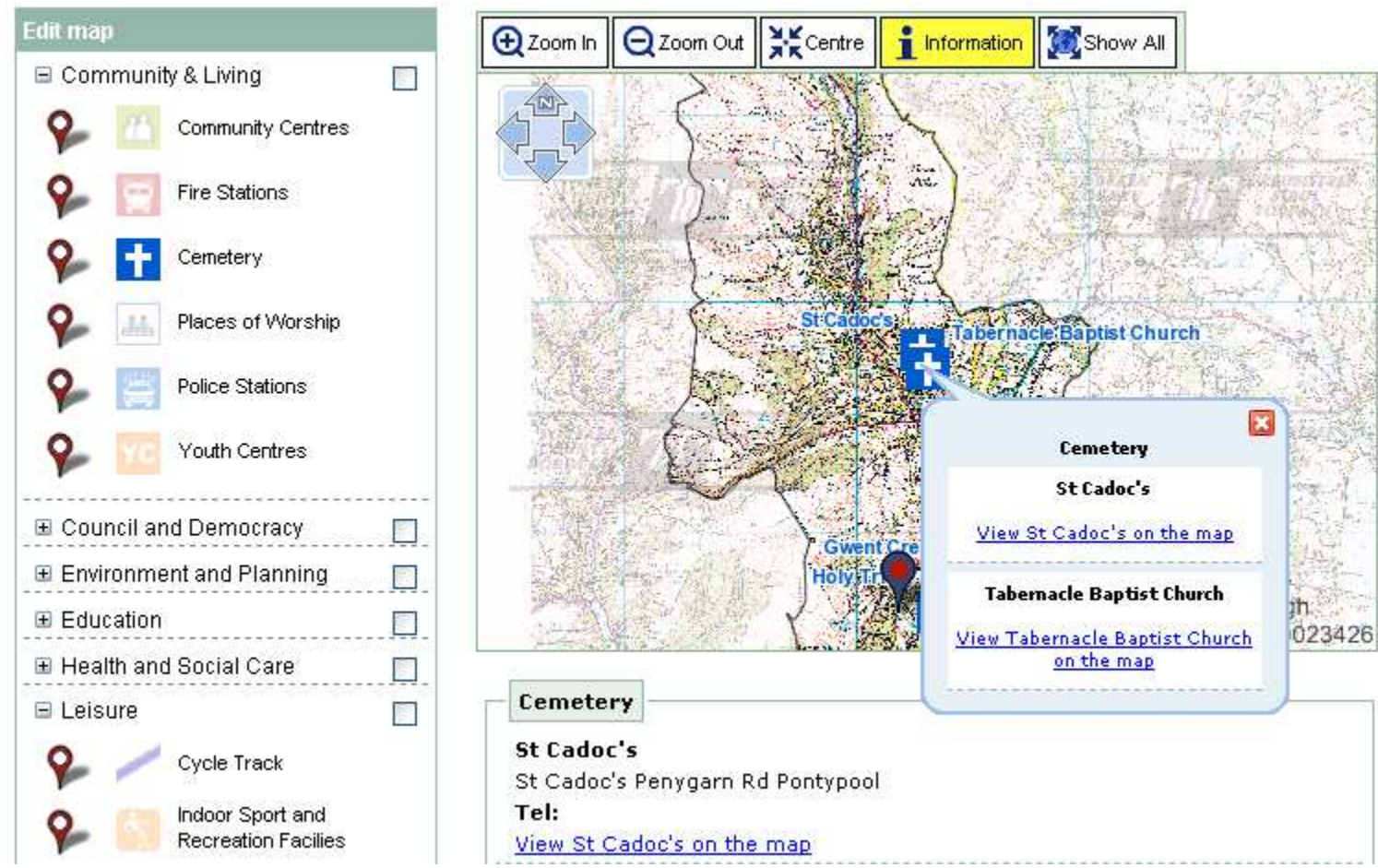
Expert mode:  
 Show expert mode  
ogr2ogr.exe -skipfailures -lco overwrite=yes -f "MapInfo File" -a\_srs "EPSG:27700" -t\_srs "EPSG:27700" D:\Maps\TorfaenTest\Overlays\Community\CemeteryBNG.TAB "\\gis01\maps\$\CountyData\Torfaen Data\Cemetery.TAB"

Additional parameters:  
-t\_srs "EPSG:27700"

Save the task and click the **Test Task** button. If the test passes, un-check the **Additional Parameters** box and run the task



The contents of this layer should now be restored and display on the map with all relevant information in the tool-tip and info-click.



**NOTE** This issue also relates to MyHouse layers.