

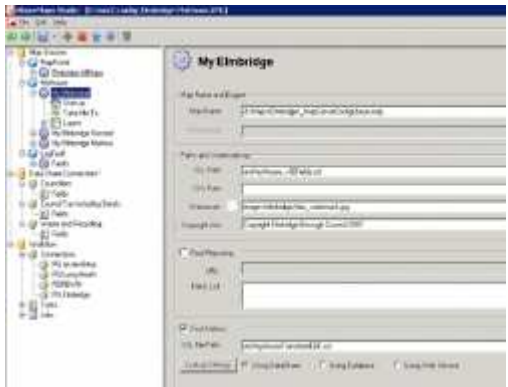





Neither this document nor any part of it should be disclosed to any third party without the prior written consent of Astun Technology Limited. You acknowledge that this document has been provided in reliance upon it being subject to the exemption to disclose. If you disagree that this exemption applies then please return the information and expunge all records of it from your systems, unless we agree to waive this requirement.

## How do I add UPRN based information?

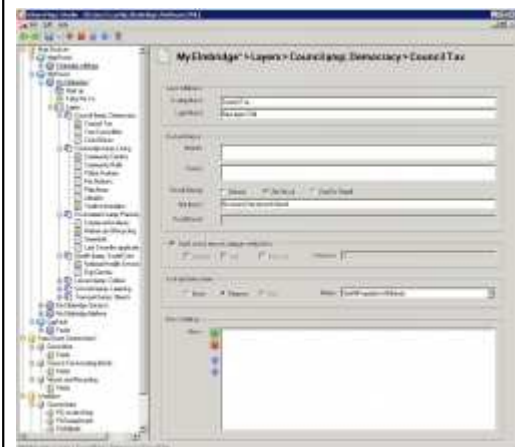
Steps	Result
<p>Let us add information on <b>Council Tax</b> collected from a back office database.</p> <p>The first step is to add a Connection to the database into Data Share and select the <b>Query Field</b> to be the field which holds the UPRN information.</p> <p>This scenario performs a UPRN Lookup.</p>	
<p>Next select the fields in the database that you wish to use.</p>	
<p>Now we need to add the DataShare entry to the My House entry.</p> <p>Select the <b>My House</b> entry in the Explorer, in this case <b>My Elmbridge</b>.</p> <p>Click on the <b>Using DataShare</b> radio button and then click <b>Lookup Settings</b>.</p>	
<p>Use the <b>green +</b> to add your DataShare DataSource to the list. In this scenario the <b>GetAllPropertiesWithBands</b> holds the Council Tax information and <b>qryONLINE_SERVICES</b> Refuse and Recycling information.</p>	

Now you are ready to create a **Virtual Layer** [a layer without map information].

Right click on the **Layer Group** under your My House entry and select to **Add a Virtual Layer**. In this case we will add the Layer with the Display Name **Council Tax**.

Select how you wish to display your results. In this scenario we will display results if they are found but if not we will display the message **"No council tax records found"**

Next, select the **Property** radio button to Lookup the Database and select the Name for the DataShare entry for Council Tax from the list. In this case GetAllPropertiesWithBands.



Now you can see the results:

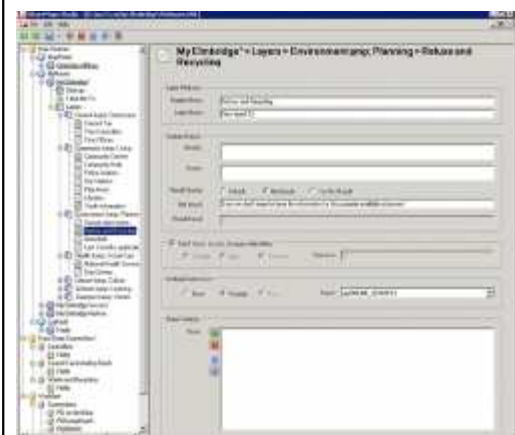
Under the heading **Council & Democracy** then is a new **Council Tax** layer.

This shows all the information regarding council tax matching the UPRN of the selected address.



We already have a connection to Refuse & Recycling in DataShare and this has been selected as a valid Datasource for My House entry so we just need to add a new Virtual Layer as we did for Council Tax only this time under the **Environment and Planning** layer group.

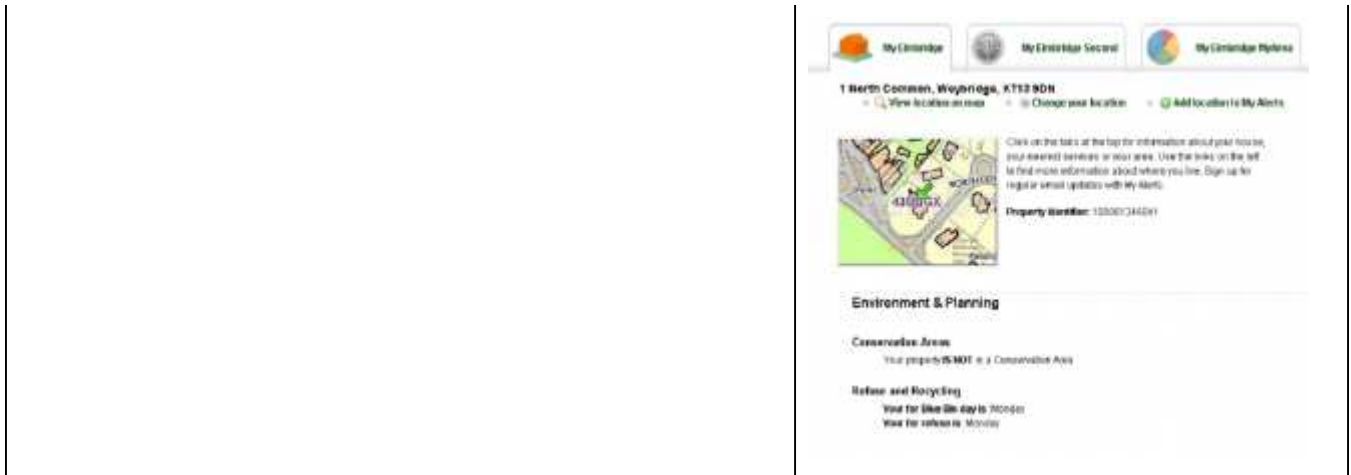
This time we have a different message if no records are found and the Name for the Lookup Datasource is **qryONLINE\_SERVICES**.



Now you can see the results:

Under the heading **Environment & Planning** then is a new **Refuse and Recycling** layer.

This shows all the information matching the UPRN of the selected address.



clients/cheatsheets/mapportalsetup/uprn.txt · Last modified: 2008/10/23 16:18 by kim